

# CASE STUDY

## SD-WAN Solution for Sankara Nethralaya



Sankara Nethralaya is a leading eye care provider, having centres in 15 locations across India. The hospital has over 1000 employees and serves around 1500 patients per day, performing over 100 surgeries per day.

### Problem Statement / Challenge they faced

MPLS links were used to connect the hospitals. However, faced frequent application slowness due to bandwidth choking and branch downtime at times. They wanted to increase the available bandwidth to users and improve uptime. In addition, they wanted to reduce their WAN operational costs.

### Applications used by Orange Retail Finance



Hospital Management  
Application



Web Access



Collaboration  
(e-mail, Voip)



Branch Operations  
(biomet, HRMS)

## Solution Offered by COSGrid

COSGrid deployed **Reflex-Hyb WAN** solution (**SD-WAN**) by installing COSGrid Reflex Edge in each of their branch offices and managed by COSGrid Guider. Gradually migrated away MPLS for all branches



Leveraged 4G as a complementary to MPLS

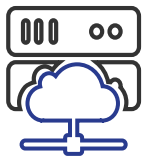


4G used as local breakout for Internet and backup for MPLS



Security policies were applied centrally and in automated way

## COSGrid Reflex HybWAN solution Features :



MPLS migration  
to SD-WAN



Secure Branch  
Internet Access



Centralised  
Management



Enhanced App  
Performance

## COSGrid Reflex HybWAN solution Overview :

COSGrid Reflex Hyb-WAN deliver a leap in the availability of higher bandwidth, quality, and secure network by leveraging the flexibility & pervasiveness of the Internet (including Broadband, 4G, Cable, VSAT, and Internet Leased Line)

- > QoS policies for business-critical traffic.
- > Link quality and business policy-based traffic steering  
(between Internet links)
- > Adaptive Multi-path traffic aggregation
- > Authenticated and Encrypted traffic end-to-end
- > Network Acceleration for chatty apps.



## COSGrid Reflex Hyb WAN Components :

### COSGrid Reflex Edge



COSGrid Reflex-Edge is a virtual gateway deployed at the perimeter of a site/branch or on the cloud to act as an entrance for your WAN. COSGrid Reflex-Edge Gateway is a zero-touch deployment (ZTD) capable of self-configurable features that can do routing, forwarding, security, encryption, QoS, policy, and management.

### COSGrid Guider



COSGrid Guider provides centralized organization wide installation, configuration and real-time monitoring in addition to orchestrating the data flow through the cloud network. COSGrid Guider enables one-click provisioning of virtual services in the branch, the cloud, or the enterprise data center or Cloud AZs. Intuitively intelligent COSGrid Guider App helps CXOs to enable their business users secure access to WANs or Corporate network for their respective roles and applications.

## Why COSGrid Networks ?



Technological Innovations like Patented Multi-Path Traffic Aggregation , Mesh VPN , NetSecOps in a single dashboard.



Integrated Network Security & SD-WAN platform for remote branch offices, WFH users, IoT & cloud access.



Resilient and flexible WAN with customised workflow and support.



Industry-proven value proposition with solid customer retention for more than 6+ years



Cost effective products and solutions w.r.t Pain Points and Use cases



Durable and Robust Hardware

## Customer Benefits :



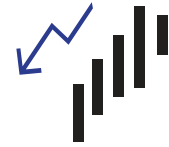
2X faster App  
Performance



5X More  
Bandwidth



Improved Staff  
productivity



Lower Branch  
Dwontime

## Customer Testimonial :

*“ We were heavily reliant on MPLS links to run our wide area network for servicing patients in India. COSGrid solutions on SD-WAN Solutions were both transformative and cost-effective.”*


**Mr Chandra Mouli, IT Head  
Sankara Nethralaya**



 [www.cosgrid.com](http://www.cosgrid.com)

 [info@cosgrid.com](mailto:info@cosgrid.com)

 India , USA

 +91 90227 64534,  
+91 86101 44212

*An OEM Cybersecurity and Network Connectivity Product Company with a focus lies in Secure and reliable Connectivity (4G/ 5G SD-WAN, NG Router Firewall, SASE) along with a Holistic security approach (Advanced Threat Protection, Cloud Security, Zero Trust) and Network Visibility (User Experience Management (UEM) / Digital Experience Management (DEM)).*